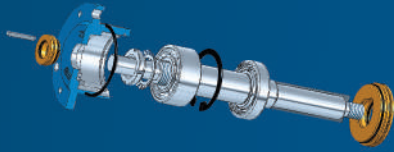
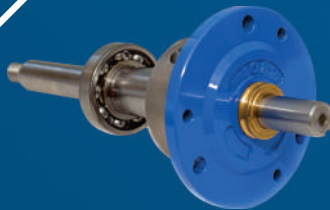
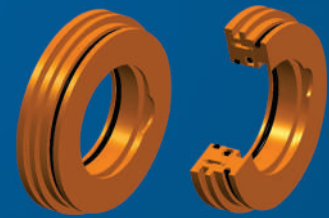
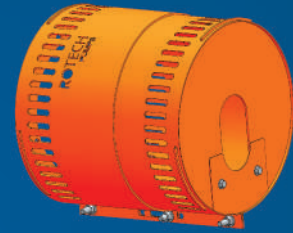
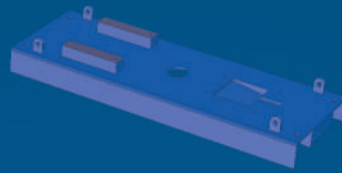


"A Trusted Partner in Pump Solutions"

**PUMP
SPARE PARTS
&
ACCESSORIES**



STANDARD FABRICATED STEEL BASE FRAME

Lifting Hook Holes

- These holes can be used for lifting & foundation at the time of installation.

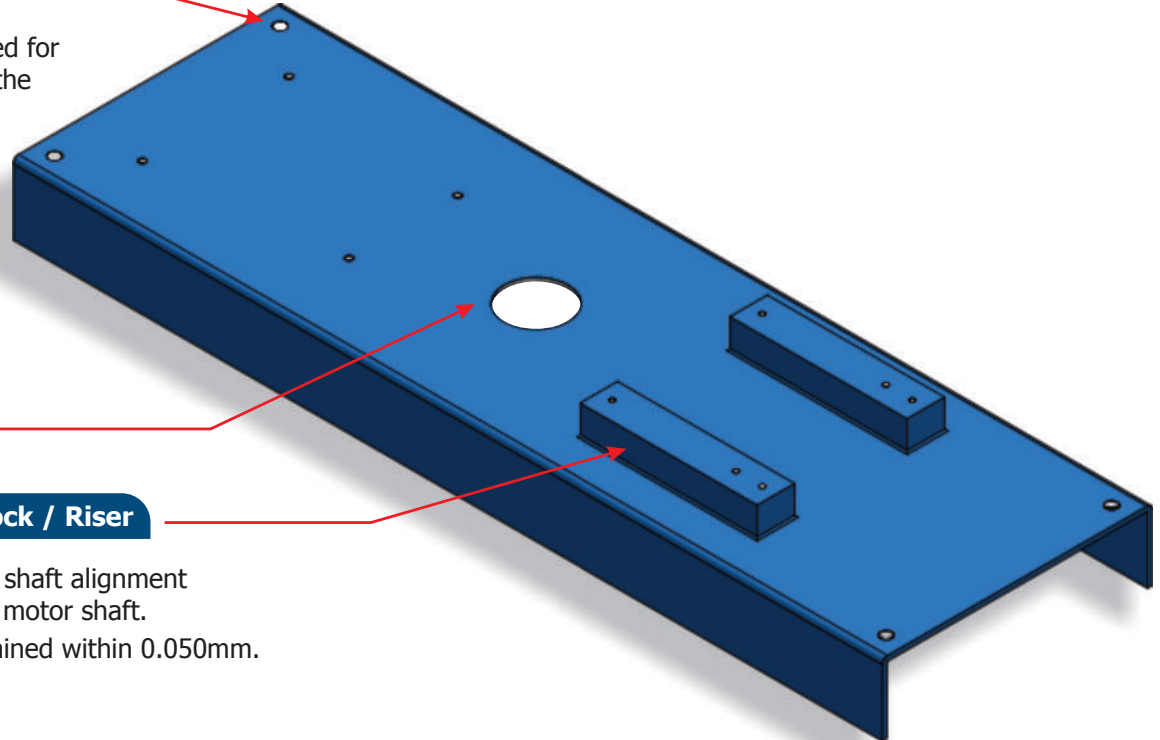
Hole for Grouting

Height Adjustment Block / Riser

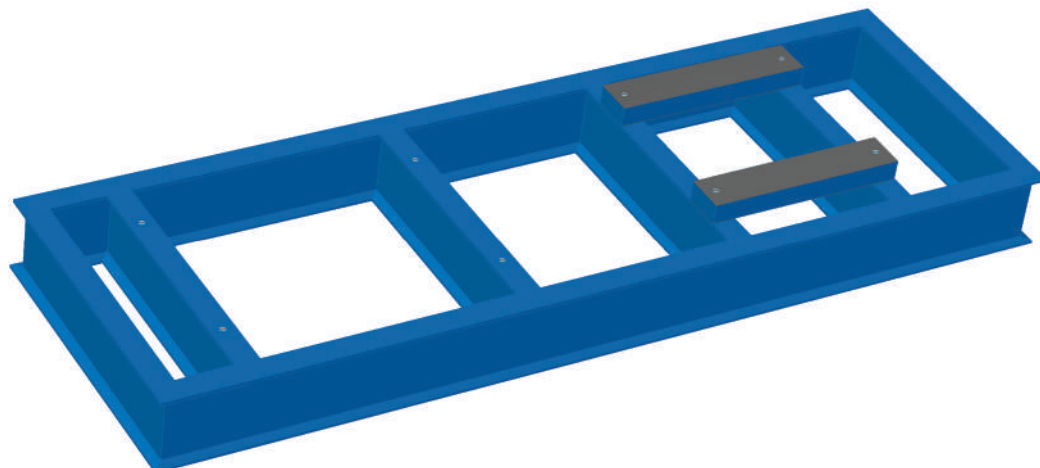
- Riser helps to maintain shaft alignment between pump shaft & motor shaft.
- Risers are being maintained within 0.050mm.

Design Features

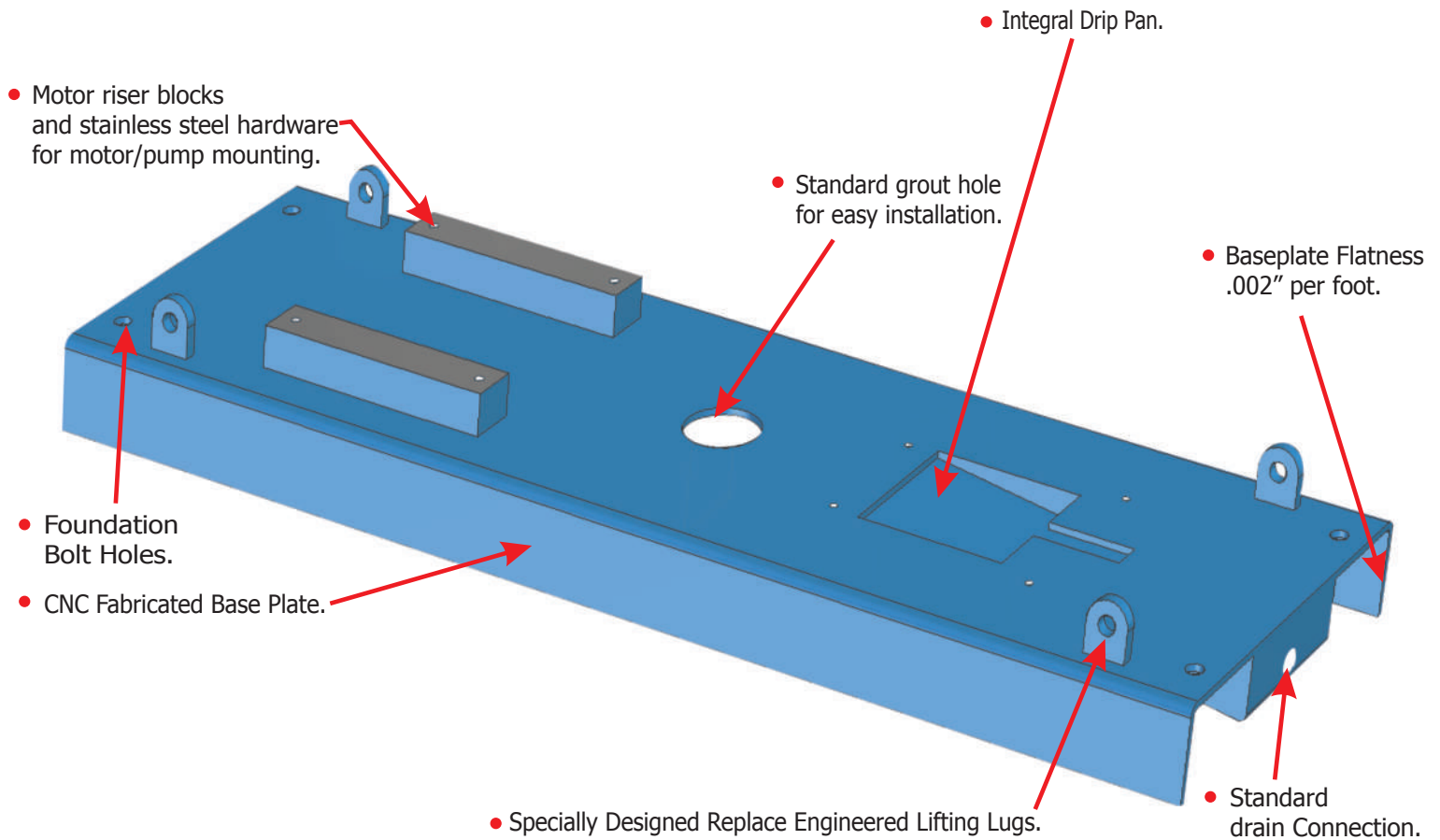
- These baseplates are designed for frame mounted / long-coupled ANSI/ASME pump combinations.
- Available in 12 models to accommodate all NEMA motor frames.
- Custom configurations to accept ISO pump and IEC motor combinations are also available.



STANDARD I-CHANNEL BASE FRAME



DRIP PAN BASE FRAME



COUPLING GUARD

DESIGN FEATURES

Safety Comes First

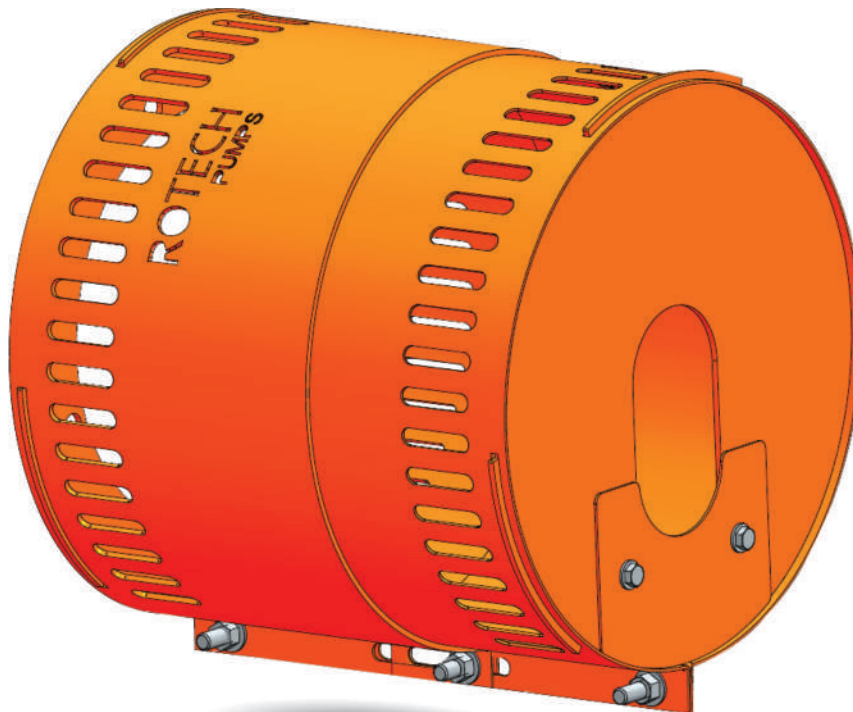
Orange Peel guards comply with OSHA, ASME and ANSI standards, and most other guards don't. Look for a Safety Orange guard, gaps no greater than 0.250" (6 mm) and ANSI Z535.4 compliant warning labels.

Maintenance Convenience Saves Time and Money

Orange Peel Guard's hinged guards open quickly by removing fasteners and "peeling" open the guard halves for coupling lubrication, inspection and maintenance.

Lowest Lifetime Cost

A low initial cost, reduced maintenance costs, superior convenience and assured safety compliance make Orange Peel guards an unbeatable value.



LABYRINTH OIL SEAL

Features and Benefits

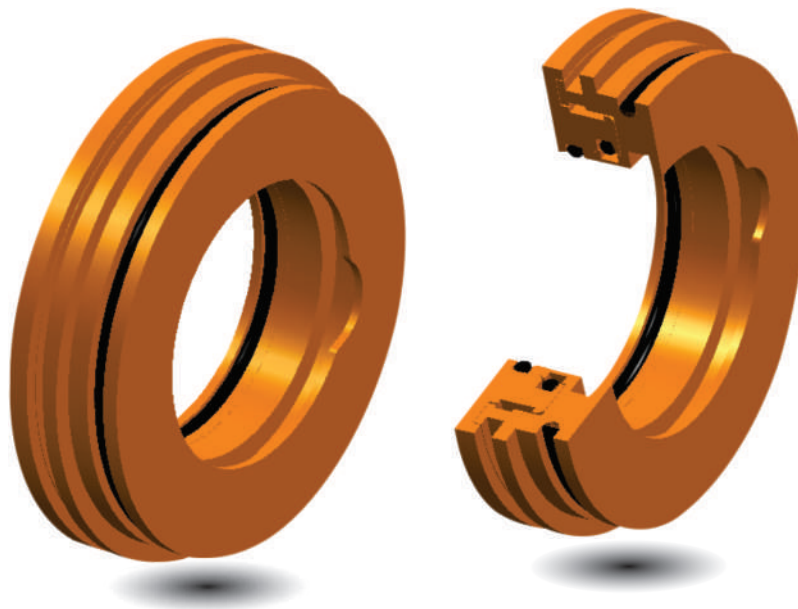
- Labryinth Seal design provides bearing protection even in the most challenging environments, extending the life of rotating equipment.
- Unitized construction will not come apart during installation.
- Non-contacting design reduces shaft drag and energy consumption.
- Substantially reduced installation time - NO ARBOR PRESS NEEDED.

Operating Capabilities

- TS 20 Pressure Limit : 20 bar
- TS 40 Pressure Limit : 40 bar
- Temperature: Up to 200C

MOC

- Bronze
- SS316 / SS304
- Mild Steel
- Polycarbonate



SUREFLEX COUPLING

Features and Benefits

- Up to 72,480 in.lbs.; 8.20 kNm.
- Spacer, bushed hub, and clamping hub designs in stock.
- Flexible design accommodates misalignment and protects equipment.
- 7° to 21° torsional wind up.
- Needs no lubrication, no maintenance.

Easy, Quick Installation

- Sure-Flex Plus can be installed quickly and easily, its simple design with no bolts, gaskets, covers or seals.
- Alignment can be checked on the precision-machined flanges using only a straightedge and calipers.
- No special tools are needed for installation, alignment or removal.

Longer Life

- Sure-Flex Plus Lasts Over 3X Longer than the Competition.
 - Extensive testing shows our sleeves outlast the imitators.
 - More uptime means less costly downtime.

Better Value

- Save Money Using a Smaller Coupling.
 - Over 50% of common applications can now use a smaller coupling, lowering the cost of both coupling purchase and sleeve replacement.

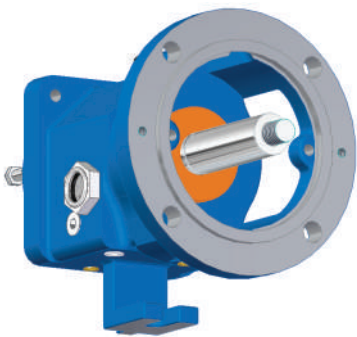
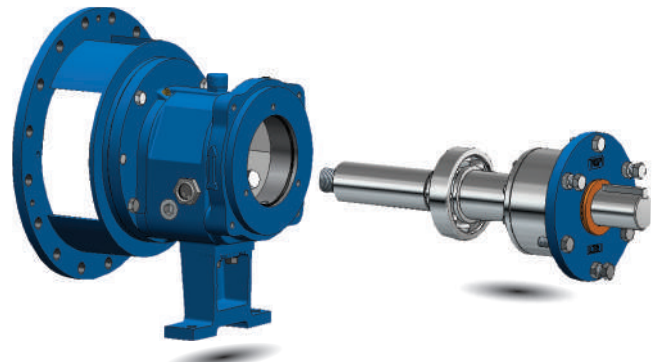
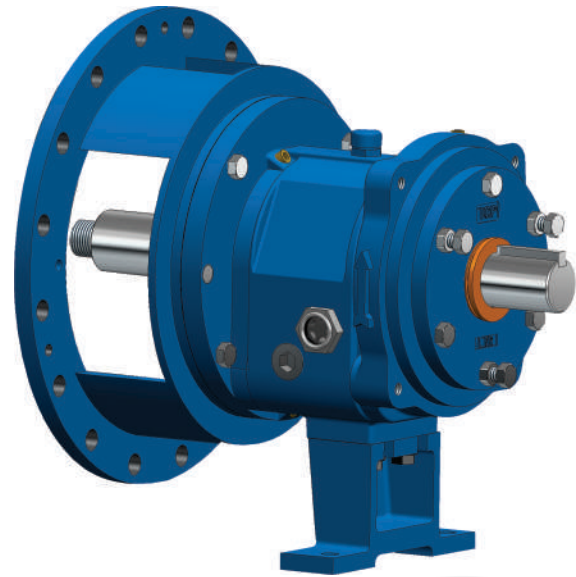
Interchangeable

- Retrofits to Existing Flanges.
 - No need to replace the full coupling – the Sure-Flex Plus.
 - Sleeve design is 100% compatible with the current industry.
 - Standard created by TB Wood's over 50 years ago.

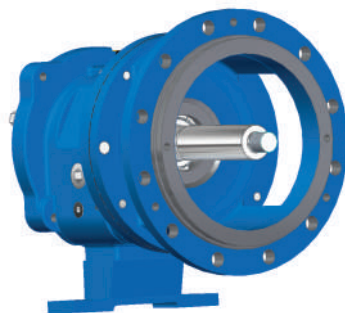


ANSI PUMP POWER ENDS

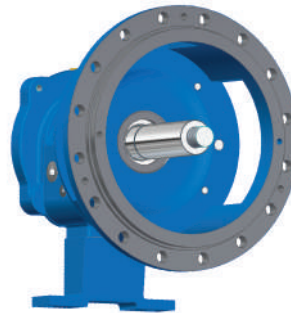
- Power Ends are interchangeable with the following Power Ends:
 - 1196 • 1196LF • 1796
- Power Ends are available in all frame sizes:
 - STR • MTR • LTR • XLR
- Ground finish shaft & sleeve minimizes runout.
- Magnetic drain plug assists with collecting foreign objects in oil cavity.
- Power Ends ship fully assembled.
- Quality SKF® bearings increase pump life.
- Subassembly simplifies maintenance & inventory.
- Replace instead of repair to save on downtime while ensuring factory built tolerances.
- Fully interchangeable with existing Rotech Pumps.
- Upgrade to a 316 Stainless Steel Power End to garner the thermal and corrosive advantages of 316 Stainless Steel.
- ANSI/ASME B16 compliant.
- Available in a variety of shaft & sleeve material combinations.
- Quality hybrid bearing isolators protect your pump's bearings.



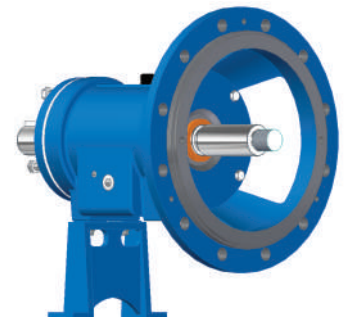
STR



MTR

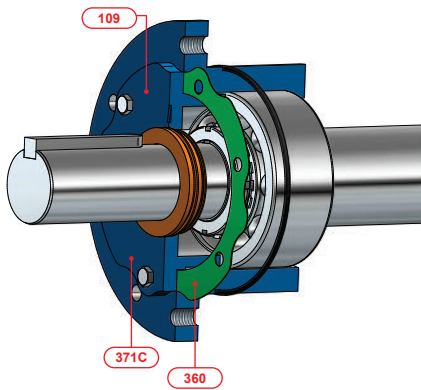
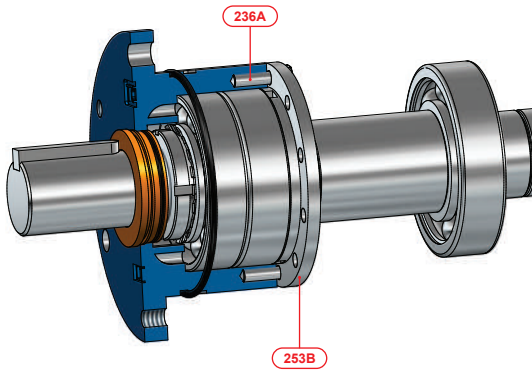
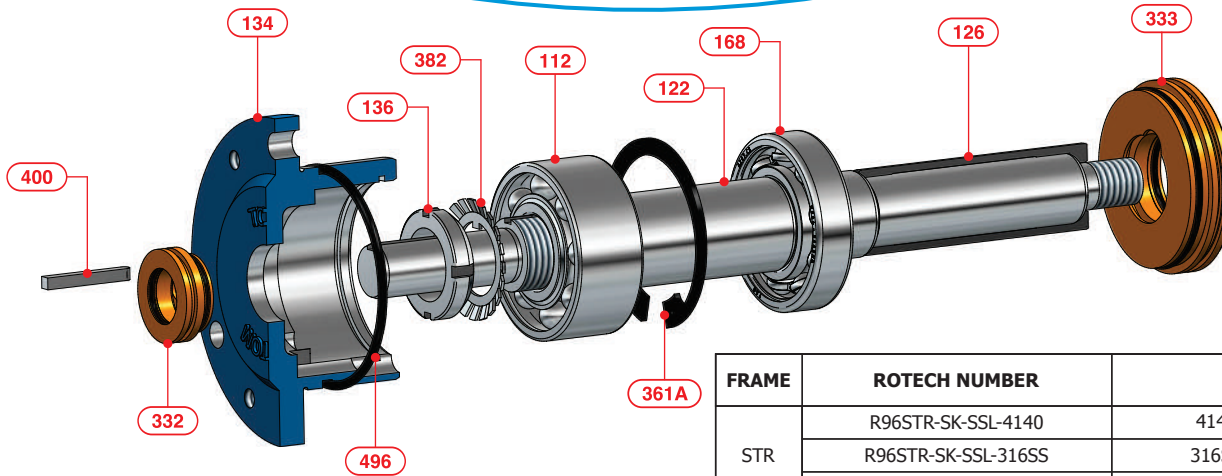


LTR



XLR

ANSI PUMP SHAFT KIT ASSEMBLY



FRAME	ROTECH NUMBER	MATERIALS
STR	R96STR-SK-SSL-4140	4140 SHAFT/316SS SLEEVE
	R96STR-SK-SSL-316SS	316SS SHAFT/316SS SLEEVE
	R96STR-SK-SOL-316SS	316SS SOLID SHAFT- NO SLEEVE
MTR	R96MTR-SK-SSL- 4140	4140 SHAFT/316SS SLEEVE
	R96MTR-SK-SSL-316SS	316SS SHAFT/316SS SLEEVE
	R96MTR-SK-SOL-316SS	316SS SOLID SHAFT- NO SLEEVE
LTR	R96LTR-SK-SSL- 4140	4140 SHAFT/316SS SLEEVE
	R96LTR-SK-SSL-316SS	316SS SHAFT/316SS SLEEVE
	R96LTR-SK-SOL-316SS	316SS SOLID SHAFT- NO SLEEVE
XLR 13" & 15"	R96XLR-SK-SSL- 4140	4140 SHAFT/316SS SLEEVE
	R96XLR-SK-SSL-316SS	316SS SHAFT/316SS SLEEVE
	R96XLR-SK-SOL-316SS	316SS SOLID SHAFT- NO SLEEVE
XLR 17"	R96XLR17-SK-SSL-4140	4140 SHAFT/316SS SLEEVE
	R96XLR17-SK-SSL-316SS	316SS SHAFT/316SS SLEEVE
	R96XLR17-SK-SOL-316SS	316SS SOLID SHAFT-NO SLEEVE

PART LIST

ITEM NUMBER	DESCRIPTION
1	Coupling Key
2	Labyrinth Seal, OB
3	Labyrinth Seal, IB
4	Bearing Housing
5	O-ring, BRG Housing
6	Bearing Lock Nut
7	Lock washer
8	Bearing, Thrust, OB
9	Bearing, Radial, IB
10	Retaining Ring
11	Shaft, Sleeve Type
12	Shaft, Solid Type
13	Sleeve
14	Clamp Ring
15	Bolt, Clamp Ring
16	BRG End cover, OB
17	Bolt, Cover to HSG
18	Gasket End Cover

- Ground Surface Finish Of Shaft And Sleeve Minimize Runout.
- Subassembly Simplifies Maintenance & Inventory.
- As Standard Brass/bronze Bearing Isolators Protect Your Pump.
- Parts Are Fully Interchangeable With Peerless, Goulds Summit And Griswold.

PUMP PARTS



"A Trusted Partner in Pump Solutions"

Address : 1180 Britannia Road East, Mississauga,
Ontario - L4W1C8, Canada

Phone : 905-461-9617

Fax : (905) 461- 9618

Toll Free : 1-866-217-PUMP (7867)

Email : sales@rotechpumps.com | www.rotechpumps.com